

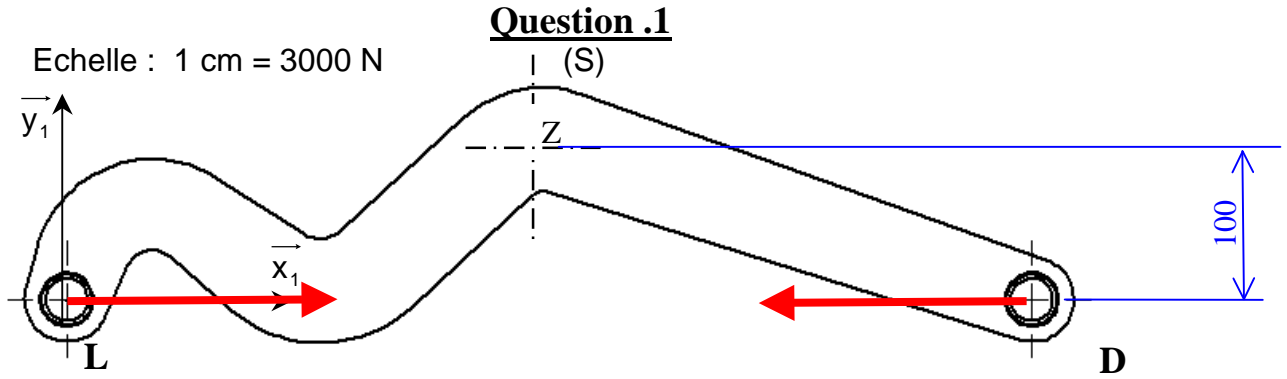


# HAYON ELEVATEUR HBC 300

## -R.D.M-

**CORRIGE**

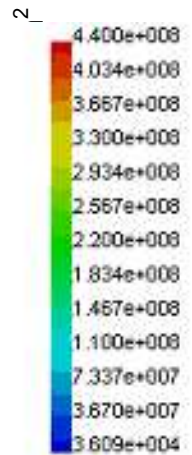
### Etude de la résistance du bras coudé



**Question .2**

Type de sollicitation(s) : **COMPRESSION + FLEXION PURE**

$$\begin{pmatrix} -12000 & 0 \\ 0 & 0 \\ 0 & 120000 \end{pmatrix}$$
 en Z



**Question .3**



**Question .4**

